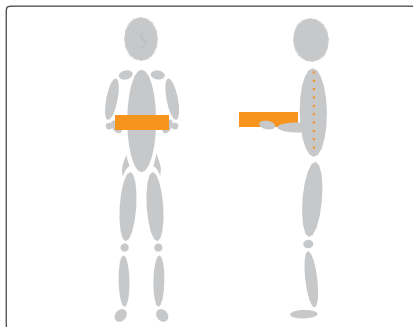




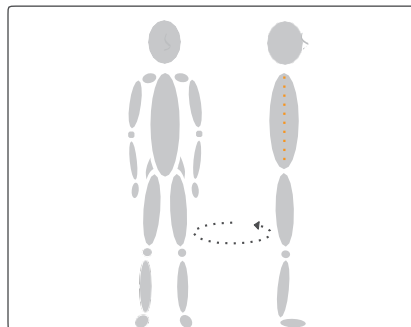
THE BEST WAY TO ...

Organise/stock products in refrigerated and frozen display cases

When stocking and organising products in refrigerated and frozen display cases, it's important to keep the load close to your body, to avoid excessive reaching and to avoid twisting and turning your back.



Lift with the load in front of and close to your body.



Keep your nose and toes pointing in the same direction to avoid twisting.



Ensure a comfortable reaching distance.



Lift with the load in front of and close to your body and keep your nose and toes pointing in the same direction.



Place the products at the front of the display case, and then push the products into place instead of lifting them.

MECHANICAL AIDS

For advice on procurement and use go to www.hvordandubedst.dk



Stock trolley

REMEMBER TO

- Place the box of products close to your body, for example on the edge of the display case
- Lift with the load in front of and close to your body
- Keep your nose and toes pointing in the same direction to avoid twisting
- Avoid long reaching distances by placing the product at the front of the display case and using it to push the other products into place